

FOR SALE

BUILDING WITH LAND

144,000 SQ-FT · 35 ACRE SITE
5 William White Blvd · Pueblo, CO
\$4,250,000

LAND:

- Land Area: 35 AC
- Frontage: Hwy 50
- Zoning: I-1 Industrial

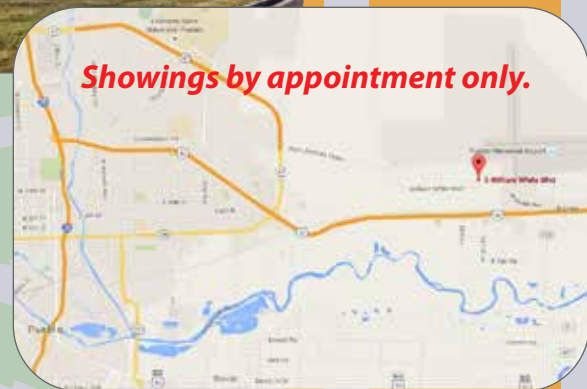
BUILDING:

- Building Area: 144,000 SF
- Year Built: 1985
- Building Type: Masonry/Steel

DIRECT AIRPORT RUNWAY ACCESS

<https://www.colorado.gov/pacific/enforcement/marijuanaenforcement>

The information has been secured from sources we believe to be reliable, but we make no guarantees or warranties, expressed or implied, as to the accuracy of the information. References to square footage and age are approximate. Buyers and/or Tenants must verify the information at their own cost and expense.



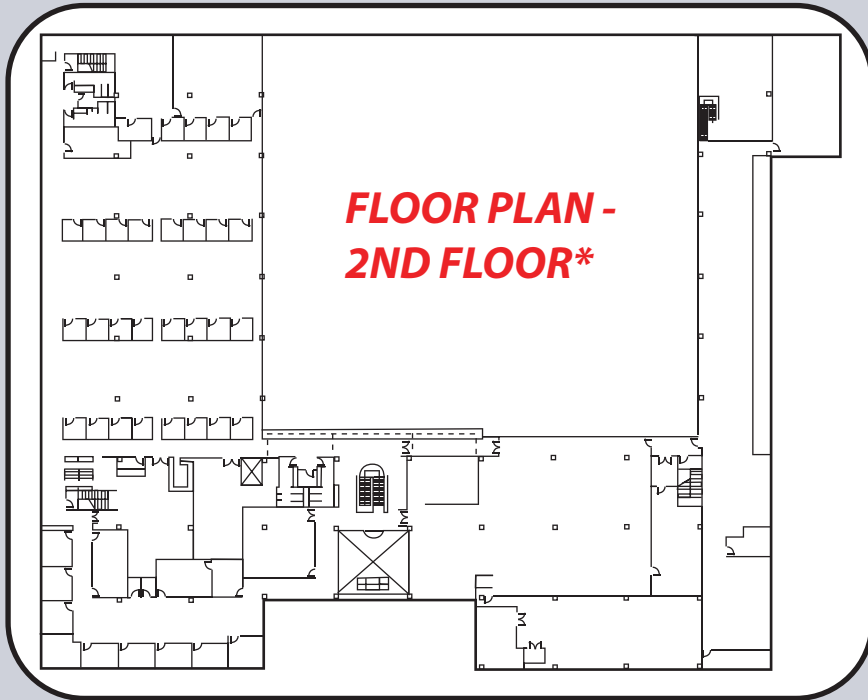
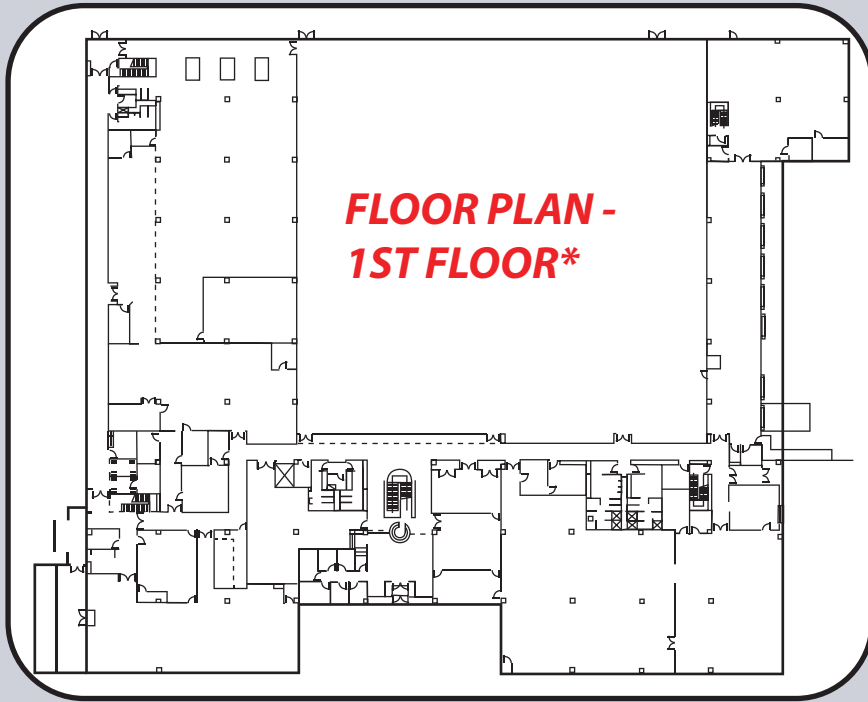
Showings by appointment only.

Tom Welsh
303.808.8570

tom@welshcommercial.com

Welsh
Commercial L.L.C.

www.welshcommercial.com



**Drawings are not drawn to scale and are for representation only.*

Tom Welsh

303.808.8570

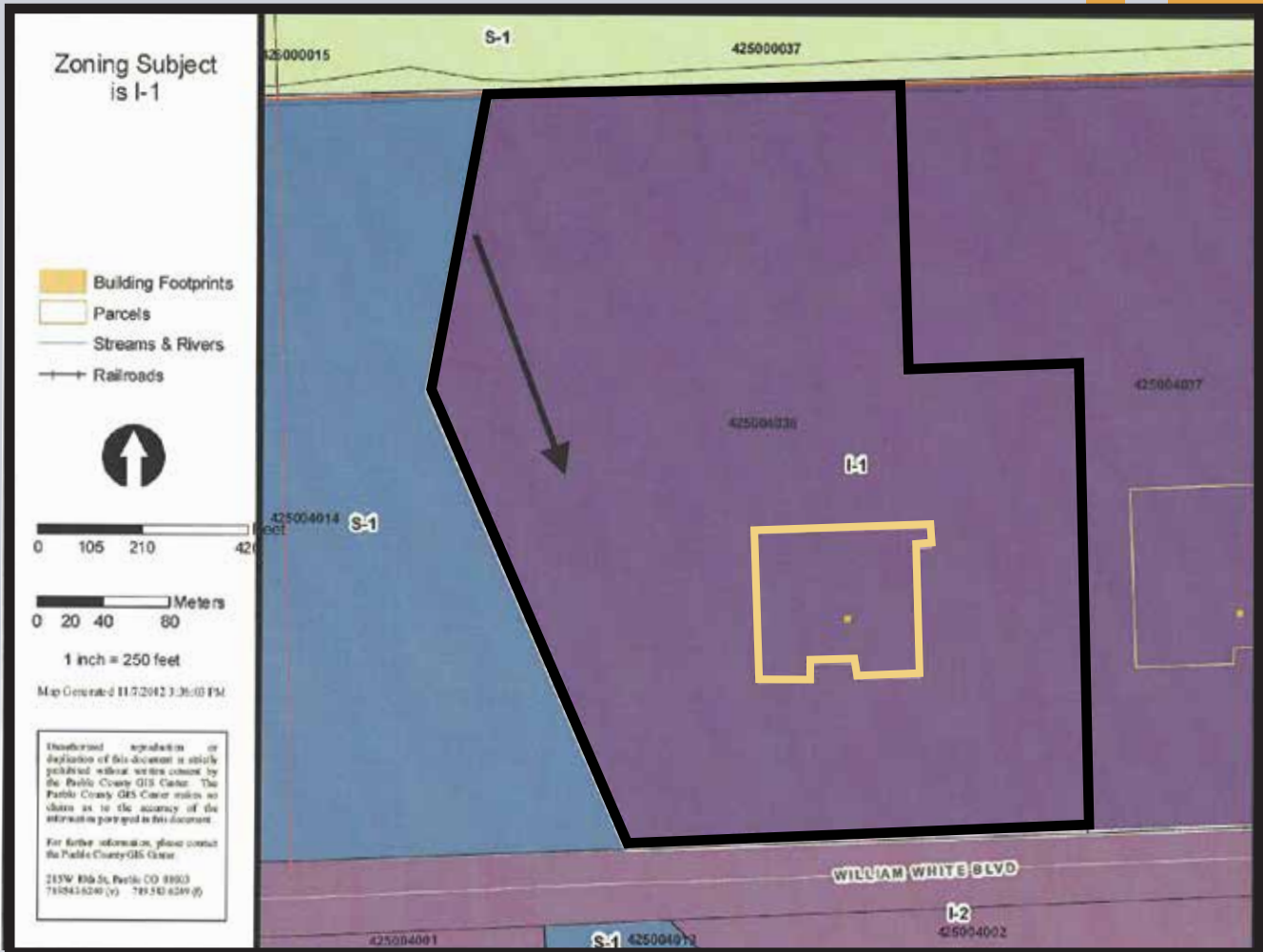
tom@welshcommercial.com

Welsh
Commercial L.L.C.

www.welshcommercial.com

ZONING SITE MAP

5 William White Blvd · Pueblo, CO



Tom Welsh

303.808.8570

tom@welshcommercial.com

Welsh
Commercial L.L.C.

www.welshcommercial.com